

St Mary's Road, Peckham

LOCATION

Peckham, South-East London

CLIENT

Northstar 2000

SECTOR

Residential

PROJECT TYPE

New Build



Accredited Installer
Henley's Roofing Ltd, Envirolec
Smart Energy Solutions (London)
Limited

System Categories
Bitumen, Living Roofs, Solar PV

Project Overview

A one-storey residential home in Peckham, south-east London, now features Axter's Biosolar PV system — a pioneering approach that combines renewable energy generation with the biodiversity and aesthetic value of a living roof.

A one-storey residential home in Peckham, south-east London, now features Axter's Biosolar PV system — a pioneering approach that combines renewable energy generation with the biodiversity and aesthetic value of a living roof. This project demonstrates the effectiveness of a well-designed, integrated system that generates green energy, creates a thriving ecosystem, and delivers long-term performance benefits while meeting the necessary planning requirements.

Working with our client Northstar 2000, a leading firm in the new build and redevelopment sector, Axter provided a complete roofing solution for this new-build residential property. As a framework client, Northstar 2000 works with Axter exclusively to meet the roofing needs of its projects, in a trusted, long-standing partnership.

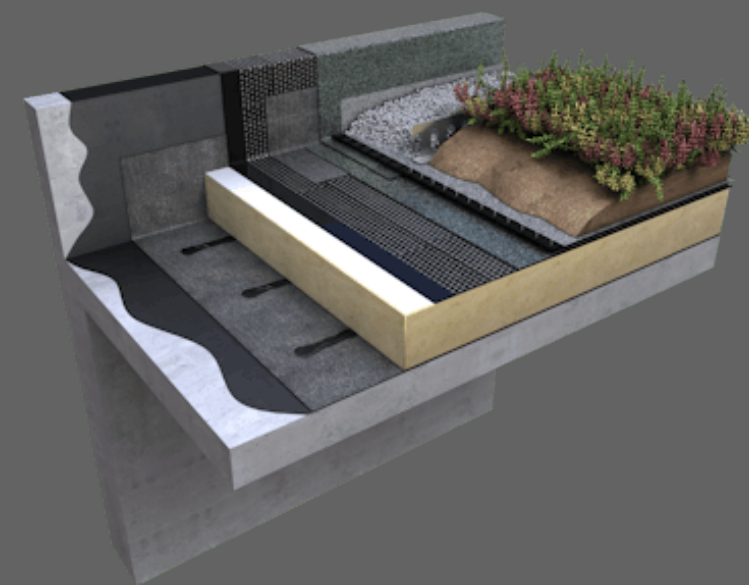
The project included:

- Cityflor® waterproofing system
- Force 4000 Trafic Capsheet
- A warm green roof system
- A biodiverse green roof
- A fully integrated solar PV system, including mounting frames, panels, and inverters

The complete Biosolar PV system was engineered, designed, and supplied by Axter, and installed by Axter accredited contractors, to ensure compliance with our rigorous quality assurance procedures.

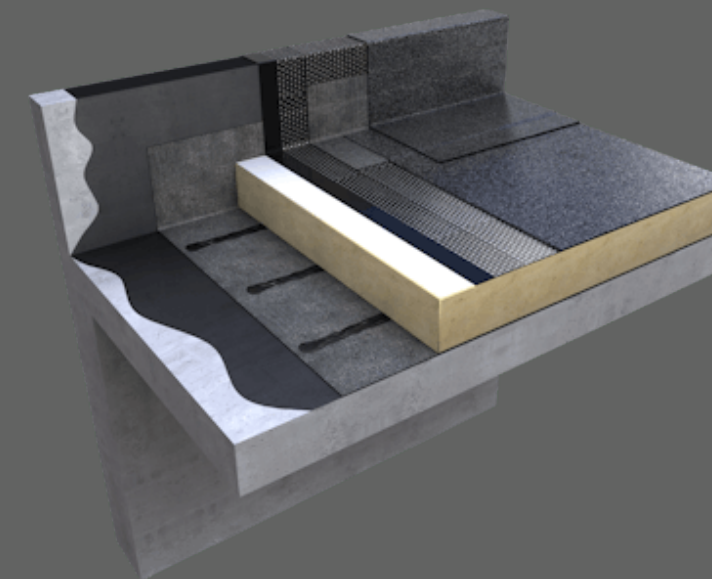


Systems in use



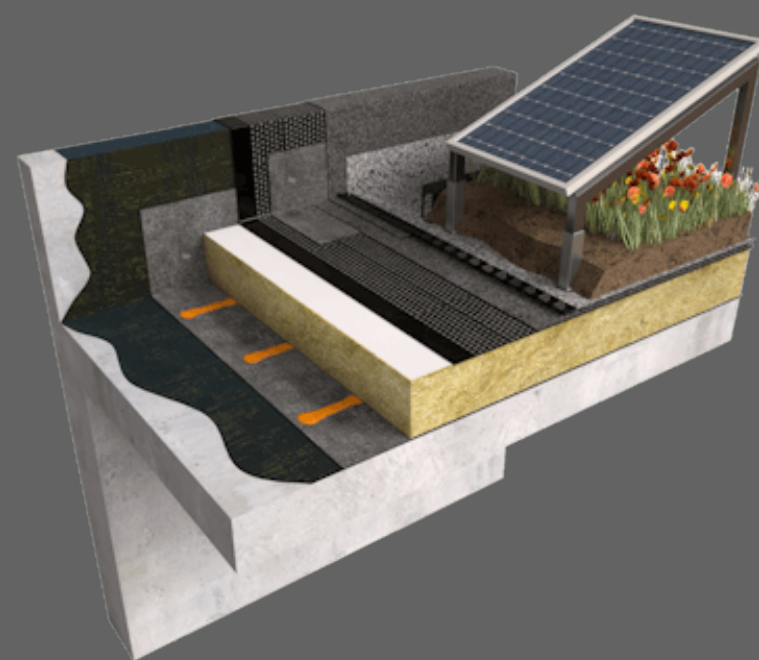
Cityflor®

Cityflor warm roof living roof systems are robust SBS polymer modified bitumen membranes for use in extensive and intensive green, biodiverse brown and modular green roofs, as well as protected terrace, podium and balcony applications.



Force®

A superior range of high performance SBS polymer modified reinforced bitumen membranes. Engineered to guarantee durability, Force self protected systems have exceptional ageing characteristics and a proven track record of excellent performance.



Biosolar PV

A Biosolar PV system integrating high-efficiency photovoltaic panels with biodiverse green roofs. Designed to maximize renewable energy generation while enhancing urban ecology, Axter Biosolar optimizes performance without roof penetration, ensuring long-term sustainability and environmental benefits.

”

This project highlights how Biosolar PV can transform residential rooftops into energy-generating green spaces, meeting planning requirements while delivering long-term sustainability benefits. The one-storey nature of the building allows residents and the local community to enjoy the beautiful green roof features as it flourishes over time, contributing to well-being in the surrounding area.

Sam Heard

Divisional Manager for Distribution and Refurbishment, Axter

Collaboration and execution

Axter worked closely with accredited contractor Henley's Roofing, who installed the waterproofing, while the green roof was fitted by Axter's supply chain partners. The solar PV system was installed by Envirolec Smart Energy Solutions, one of Axter's approved solar installers.

Careful coordination was essential across these teams to ensure smooth sequencing — from waterproofing to green roof installation and PV commissioning. This comprehensive project management was handled by Axter as part of its service offering.

Axter's accredited installer network connects clients with thoroughly vetted contractors, ensuring quality, reliability, and technical expertise.

The benefits of a true Biosolar roof

Initially, the project was set to feature solar PV with a minimal green roof area around the edges. However, Axter advised a more effective approach — using biosolar frames and a seeded system that allows shade tolerant vegetation to flourish beneath the solar panels.

The solar panels benefit from a cooler ambient temperature, due to the evapotranspiration effect of the living roof. This elevates the performance of the panels, enhancing their energy production, while reducing the urban heat island effect — where urban areas experience higher temperatures than surrounding rural areas.

This approach maximised both the green coverage and renewable energy potential, making better use of the roof space.

Performance and Enviromental Impact

The installation included ten solar PV modules across the roof's surface, with two plots providing a combined maximum output of 4.4 kWp (kilowatt-peak):

- Plot one (six PV modules): 2.64 kWp, achieving 24.1% self-sufficiency
- Plot two (four PV modules): 1.76 kWp, achieving 16.8% self-sufficiency

This system helps reduce the property's carbon footprint, avoiding approximately 995kg of CO₂ emissions per year. Over time, this equates to a considerable environmental benefit while also lowering energy costs for the future homeowner.



”

We created an efficient, thriving ecosystem that generates clean energy while improving urban biodiversity and roof longevity. We are proud to collaborate with Northstar 2000 on an ongoing basis, ensuring that every project we work on meets the highest standards of quality, sustainability, and resilience.

Sam Heard

Divisional Manager for Distribution and Refurbishment, Axter

Peace of mind

Amidst a competitive market, Axter's Biosolar PV service is designed to deliver complete consumer confidence. The roof waterproofing system is guaranteed with a service life exceeding 30 years, as per the BBA Certificate 15/5222 P2).

The Axter Biosolar PV system also comes with a comprehensive project-specific design and construction portfolio, which includes 3D site models, generation/yield calculations, wind load calculations, technical drawings, system specifications and installation guides.

This complete documentation ensures that each project is executed with clarity and precision, offering clients peace of mind from start to finish.

The Axter approach

We provide clients with a full service, from concept and technical design to completion and handover.

Our approach to each project is personalised. We listen carefully to both specifiers and clients, gaining valuable insights into their requirements, which allows us to create clear and accurate specifications for projects. And, as our specification, survey, and design services come included in the price, we offer an excellent value solution compared to other providers who do not offer the same level of support.

The St Mary's Road, Peckham project showcases our dedication to delivering efficient and sustainable roofing solutions that benefit both the environment and the people who use these spaces, while meeting all necessary planning requirements.



For more information, get in touch with **our experts:**

Axter Ltd

Harbour Landing, Fox's Marina, The Strand,
Wherstead
Ipswich, IP2 8NJ

01473 724056

info@axterltd.co.uk